



PROPERTIES



Web Ref: RL13202

E & OE

CLAREMONT UPPER - R6,950,000 REFURBISHED FOR AN IDEAL LIFESTYLE

Erf Size: 495m²

Unit/Residence Size: 121m²

Rates: R4,000



LANA HOLT
071 035 9458

lana@dgproperties.co.za

Registered with PPRA
FFC 0538512

HEAD OFFICE **021 433 2580**

SOUTHERN SUBURBS **021 671 0258**

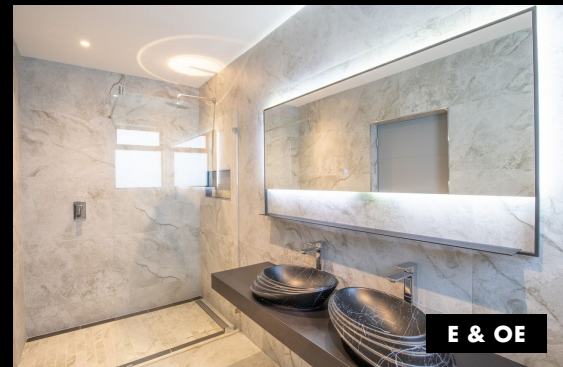
RENTALS **021 434 1242**



PROPERTIES



Web Ref: RL13202



E & OE

Features



1



2



3

Interior

Lounges	1
Dining Room	1
Bedrooms	3
Bathrooms	2
Kitchens	1

Exterior

Garages	1
Parkings	4

Floor Size

Internal	121m ²
External	495m ²

House For Sale In Claremont Upper

This light filled home offers it all: Prime location to Werpups and Herschel schools, North-facing, mountain views, excellent quality finishes and well-maintained treed garden.

Cleverly designed open concept floorplan allows for an easy indoor/outdoor flow. Generous living room with featured wood-burning fireplace, matt neutral floor tiles and stack back doors opening to a splendid, undercover conservatory style entertainment terrace.

A well-appointed kitchen, neutral stone counter tops, custom-made cupboards, shelving, Smeg 5 plate gas hob and electric oven and space to accommodate a double door refrigerator and dishwasher. Access from the kitchen to the conservatory style expansive