



PROPERTIES



CONSTANTIA - FROM R4,895,000

THE EPITOME OF CONTEMPORARY LIVING



TONY BREDEKAMP
083 602 6113
tony@dgproperties.co.za

Registered with PPRA
FFC 0373080

HEAD OFFICE 021 433 2580

SOUTHERN SUBURBS 021 671 0258

RENTALS 021 434 1242

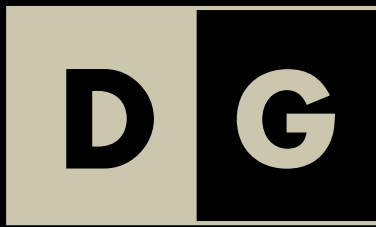
dogongroup.com
A visionary company with decades of experience



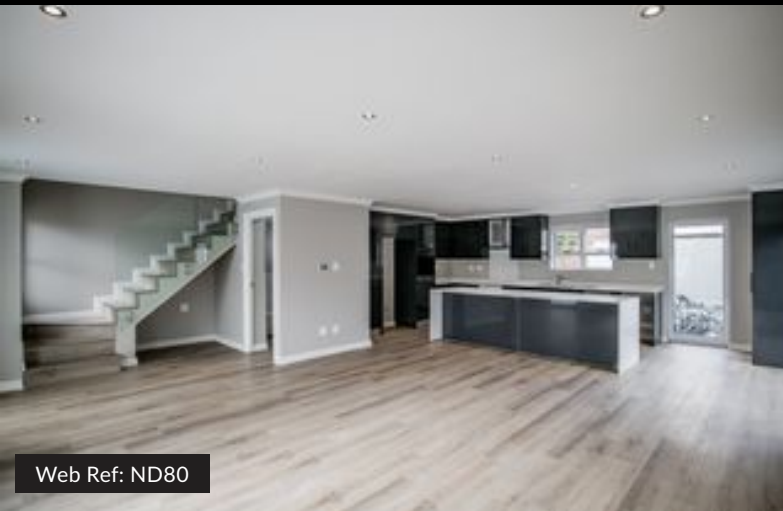
P R O P E R T I E S

The epitome of Contemporary Living

BRAND NEW DEVELOPMENT - LOCHNER - DEURDRIFT, CONSTANTIA Prices are (Incl. VAT - No Transfer Duty) Front unit - 171 sqm - R4.995 Million - completed - SOLD Back left unit - 166 sqm - R4.895 Million - nearing completion Back right unit - 190 sqm - R4.895 Million - nearing completion A rare opportunity to embrace a luxurious lifestyle in a highly desirable location: Welcome to Lochner Estate, an exquisite new development nestled in the prestigious suburb of Constantia. Known for its rich history, natural beauty, and world-class vineyards, Constantia offers a lifestyle that is unparalleled. This exclusive residential enclave seamlessly blends luxury and serenity, creating a captivating living experience. Constantia, steeped in elegance and charm, is renowned for its lush greenery, majestic mountains, and picturesque vineyards. As you enter Lochner Estate, you'll find yourself immersed in this enchanting ambience. The neighbourhood's tranquil atmosphere provides a serene retreat from the hustle and bustle of city life, allowing you to unwind and connect with nature. Embrace luxury living: Lochner Estate's 3-bedroom cluster units epitomize the essence of contemporary living in Constantia. Each meticulously designed unit offers spacious interiors that exude sophistication and comfort. Here, you'll find the perfect balance between privacy and communal living, creating a harmonious environment for families and individuals seeking upscale living. Step into the living area, where the boundaries between indoors and outdoors blur, offering breathtaking views of Constantia's natural beauty. The expansive windows invite sunlight to dance upon your floors, creating an atmosphere of warmth and tranquillity. The seamless transition to the dining space sets the stage for memorable gatherings with loved ones, as the beauty of the surroundings becomes the backdrop for cherished moments. In the heart of each cluster unit lies a sleek and functional kitchen. Adorned with premium appliances, sleek cabinetry, and ample countertop space, these kitchens are a chef's dream. Unleash your culinary creativity as you prepare delectable meals, from quick breakfasts to gourmet feasts. The kitchen becomes a space where culinary artistry and convenience converge, allowing you to effortlessly entertain and delight your guests. Convenient amenities: Lochner Estate understands the importance of convenience and offers amenities that cater to your lifestyle. Secure garaging ensures the safety of your vehicles, while a private pool beckons you to relax and unwind. Dive into crystal-clear waters or simply bask in the sun, creating a personal oasis within the confines of your own home. Embrace a luxurious lifestyle in one of Constantia's most coveted locations at Lochner Estate. Immerse yourself in a world where contemporary...



PROPERTIES



Web Ref: ND80

E & OE