



DEVELOPMENTS

THE RUBIK
UNIT FLOOR PLANS



THE
RUBIK
DESIGNED TO INSPIRE

HEAD OFFICE **021 433 2580**

dgproperties.co.za



DEVELOPMENTS

COMPANY PARTICULARS

Established in 2002, DG Properties has proven to be a true real estate success story. The DG name has become synonymous with the proficient and effective marketing and selling of premium grade properties in Cape Town and particularly the sought-after Atlantic Seaboard. DG currently have offices in high profile positions in Sea Point and Southern Suburbs.

DG Properties prides itself on its unique and focused approach to marketing and sales, providing a comprehensive and tailored solution to ensure that sales occur at the optimum price within a compressed space of time. The company utilizes an evolved and distinctive sales force of highly adept and skilled sales agents who are selected for their extensive experience, professionalism and successful track records.

Headed by Managing Director Alexa Horne, DG Properties has a dedicated in-house marketing department ensuring that focused and specialized marketing strategies are implemented. The powerful proprietary DG database combined with its eye-catching and prominent advertising, both in print and digital media, together with our visible network of sales offices support our strong performance on the Western Cape's Atlantic Seaboard, Southern Suburbs, Western Seaboard and surrounding areas.

DOGON GROUP (PTY) LTD
REGISTRATION NO: 2002/020365/07
REGISTERED WITH THE PPRA - FFC No. F110941
ALEXA HORNE (MANAGING DIRECTOR)

P O BOX 605 SEA POINT 8060
THE KINGS, 101 REGENT ROAD
SEA POINT, SOUTH AFRICA
TEL +27 21 433 2580
FAX +27 21 433 2781

SALES AGENT



LESLEY RENSBURG
061 439 8225

lesley@dgproperties.co.za

Registered with the PPRA - Full Status Agent - FFC No. 1152541

HEAD OFFICE **021 433 2580**

d g p r o p e r t i e s . c o . z a

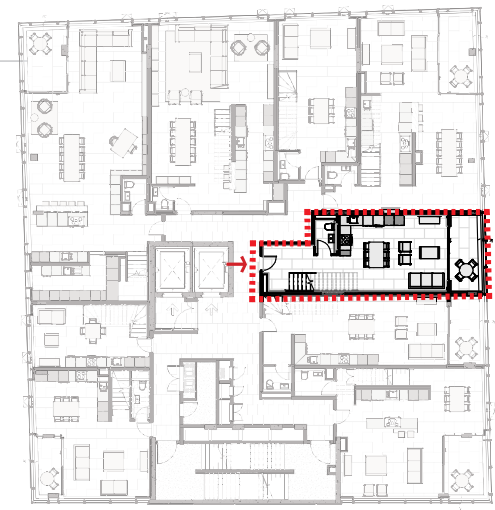
TYPICAL RESIDENTIAL 23RD FLOOR



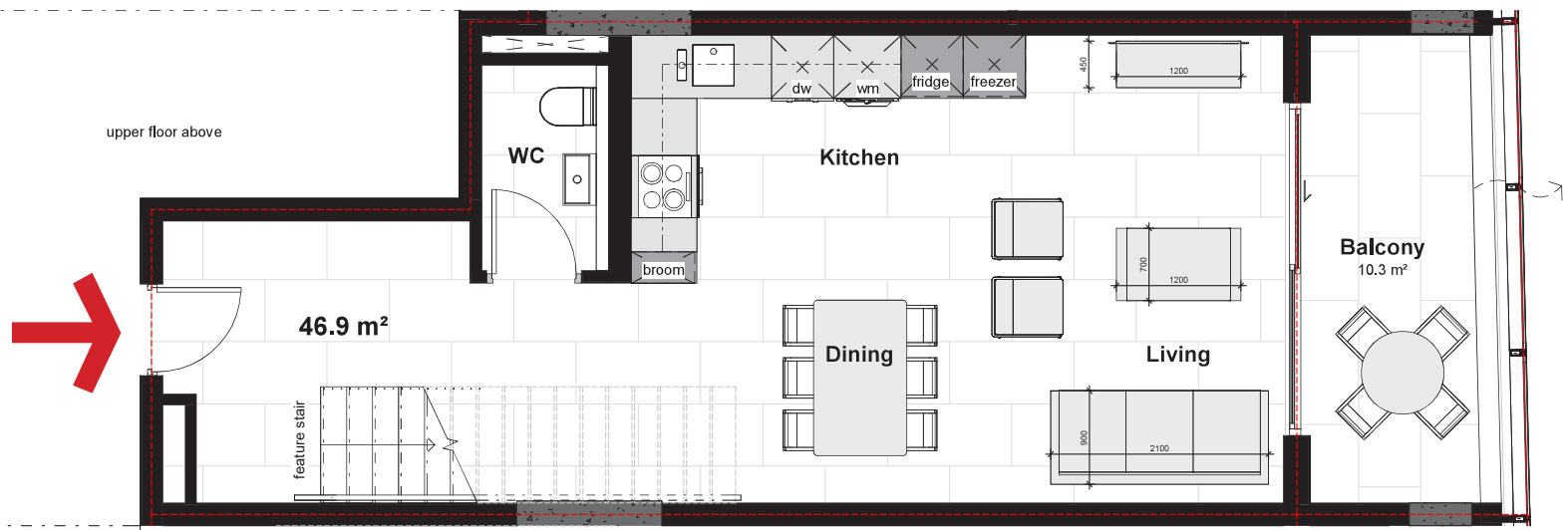
UNIT 23-05 COMBINED 04 & 05



PENTHOUSE RESIDENTIAL 25TH FLOOR (lower floor)



UNIT 25-05



upper floor above

WC

Kitchen

Dining

Living

Balcony

10.3 m²

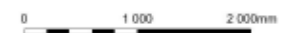
46.9 m²

feature stair

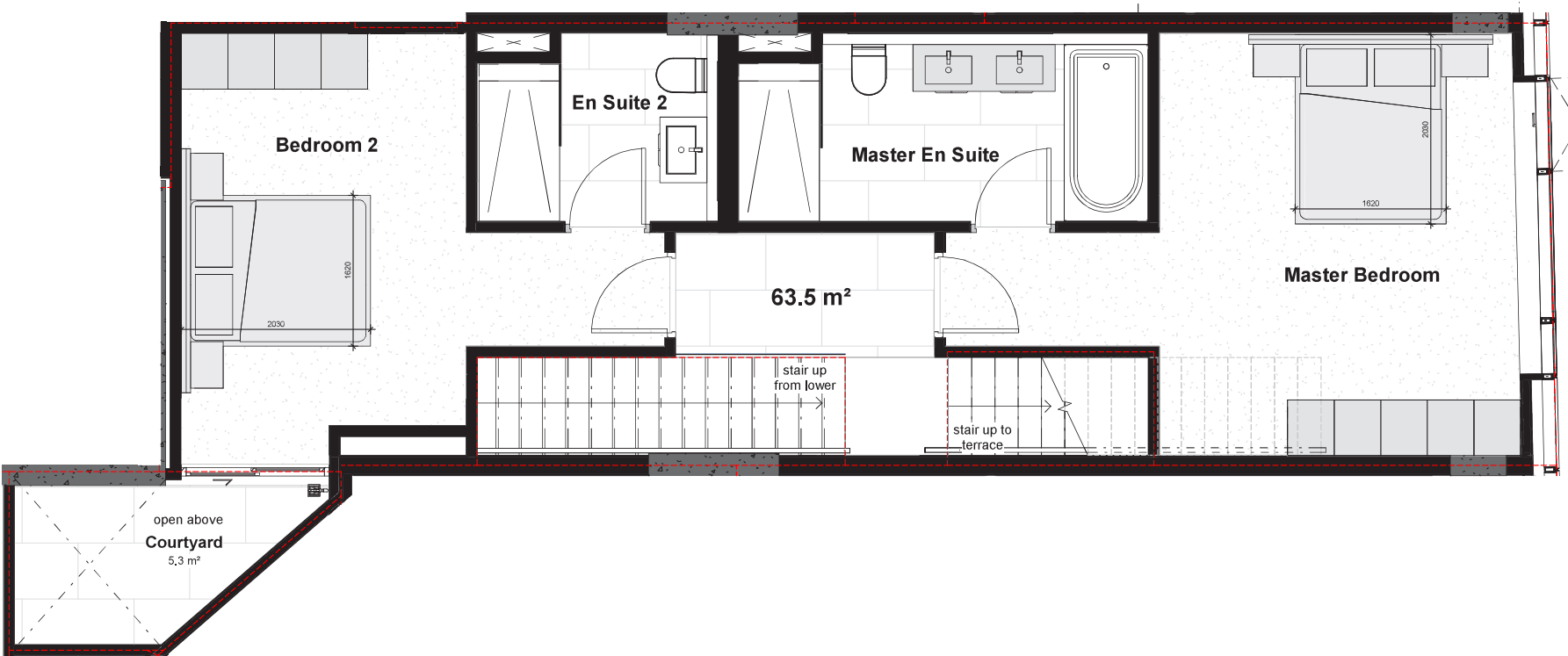
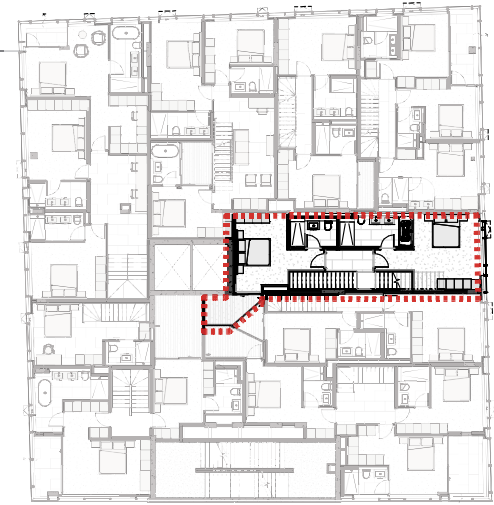
broom

dw wm fridge freezer

courtyard above

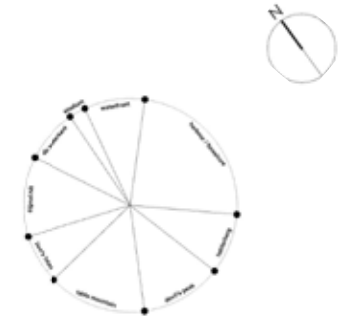
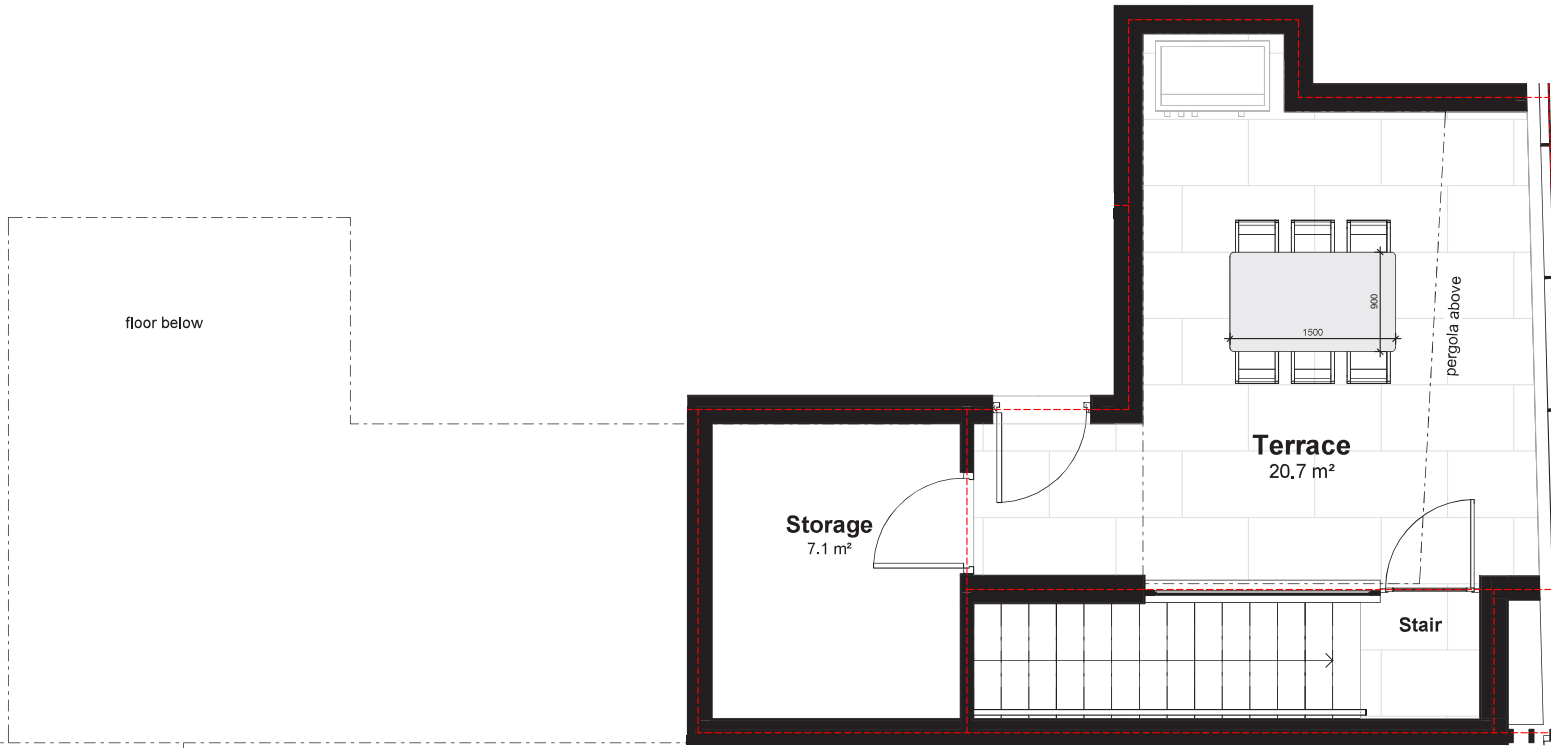
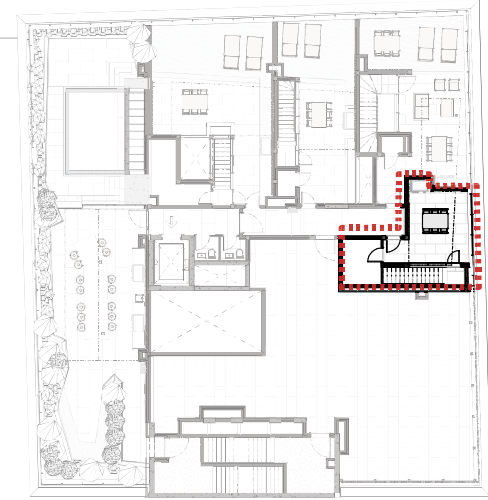


PENTHOUSE RESIDENTIAL 26TH FLOOR (upper floor)



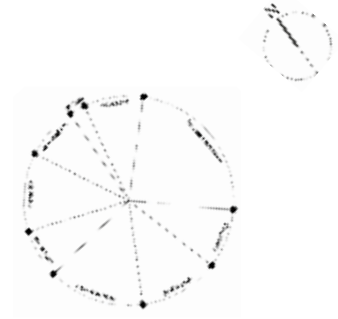
UNIT 25-05

PENTHOUSE RESIDENTIAL 27TH FLOOR (private terrace)



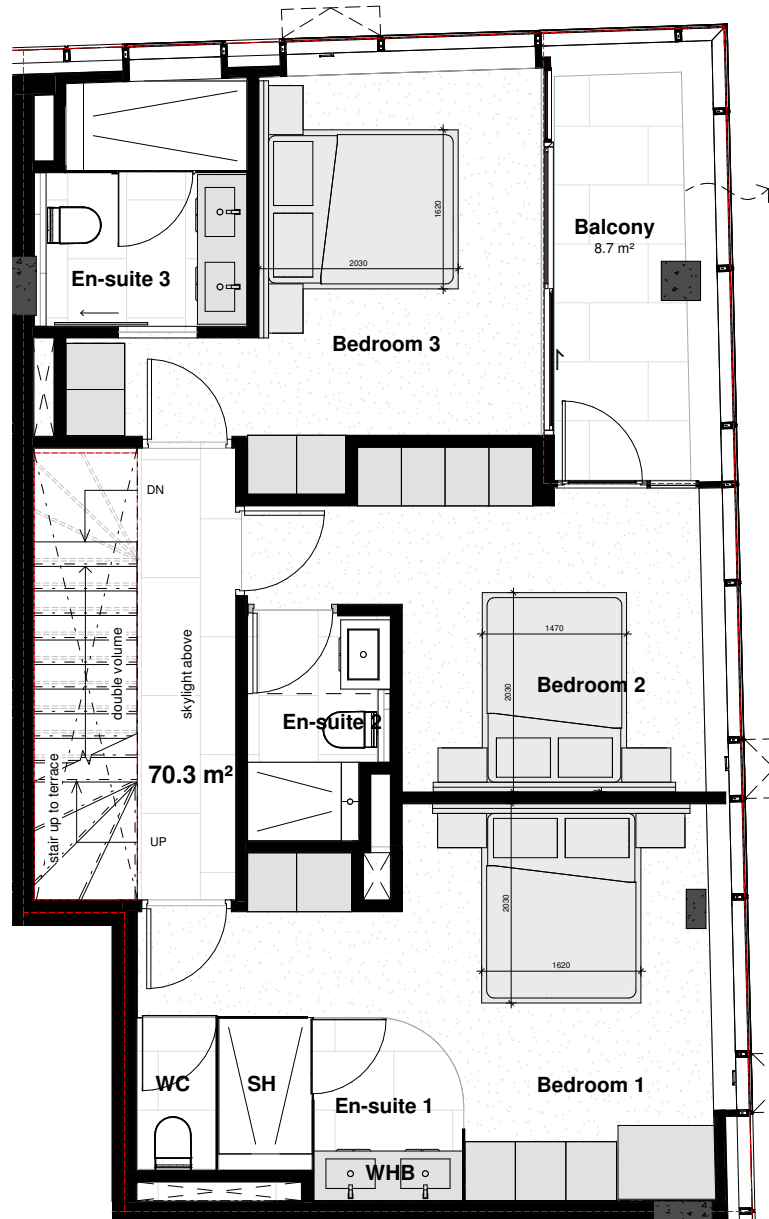
UNIT 25-05

PENTHOUSE RESIDENTIAL 25TH FLOOR (lower floor)



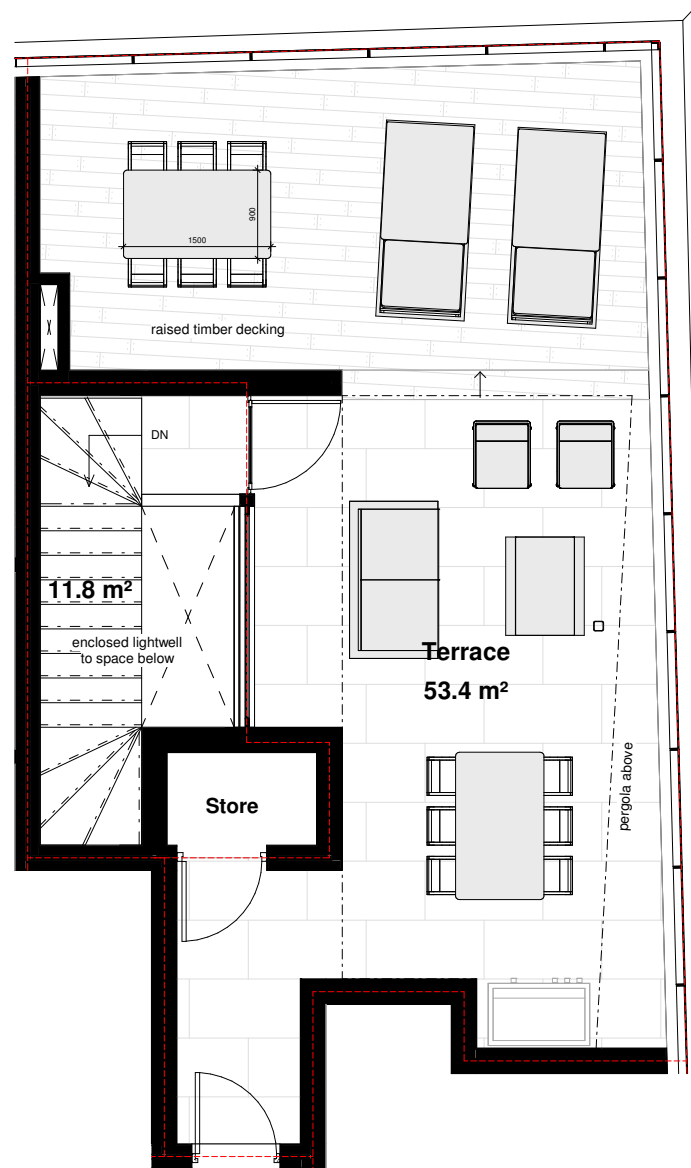
UNIT 25-06

PENTHOUSE RESIDENTIAL 26TH FLOOR (upper floor)



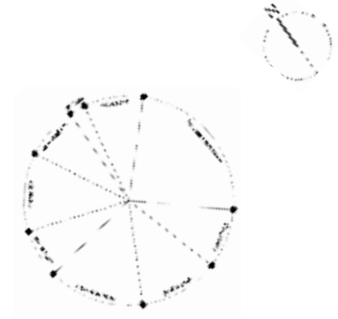
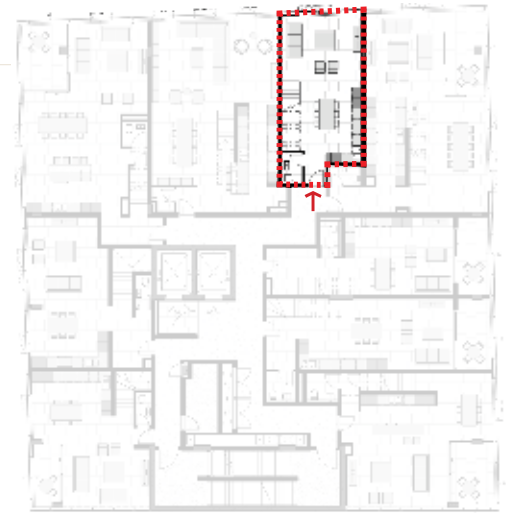
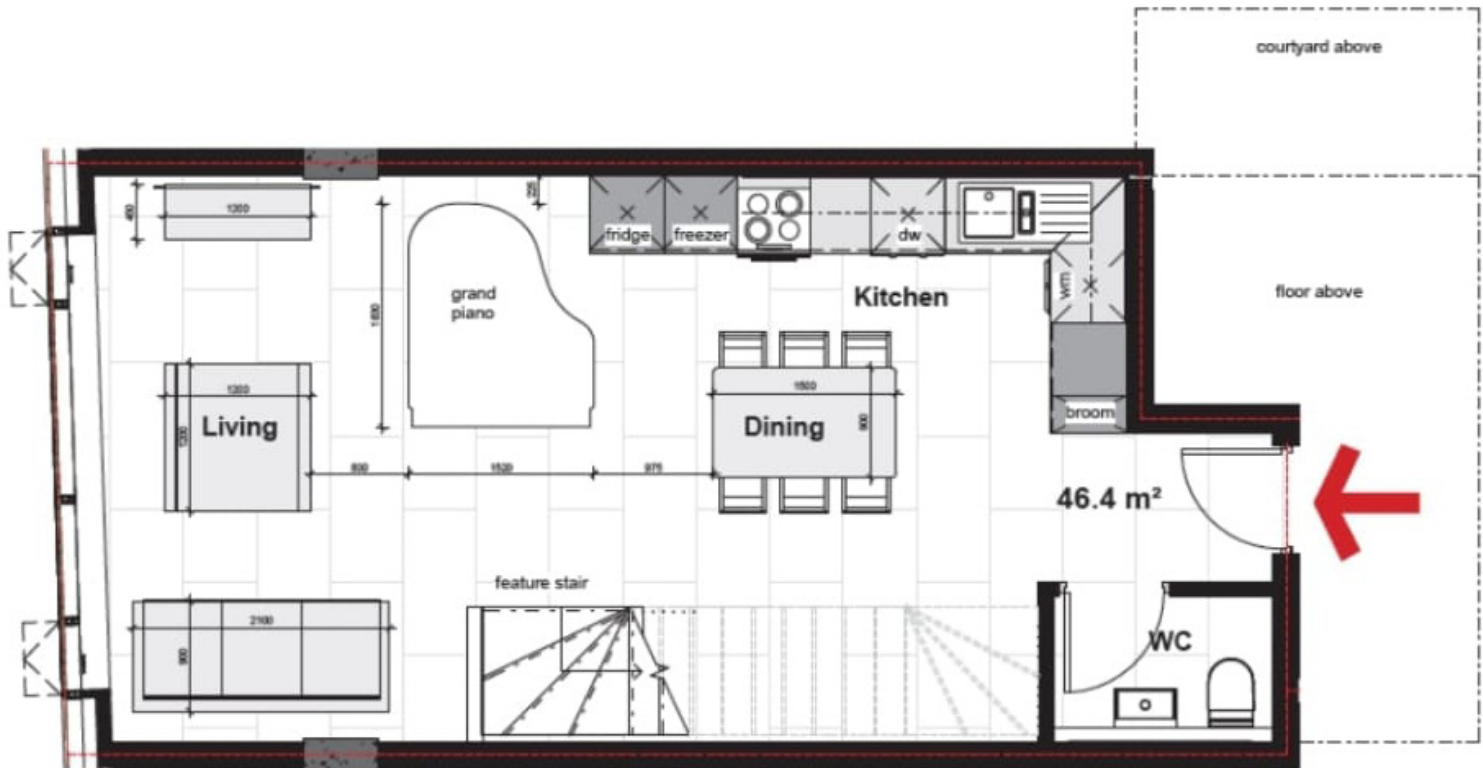
UNIT 25-06

PENTHOUSE RESIDENTIAL 27TH FLOOR (private terrace)



UNIT 25-06

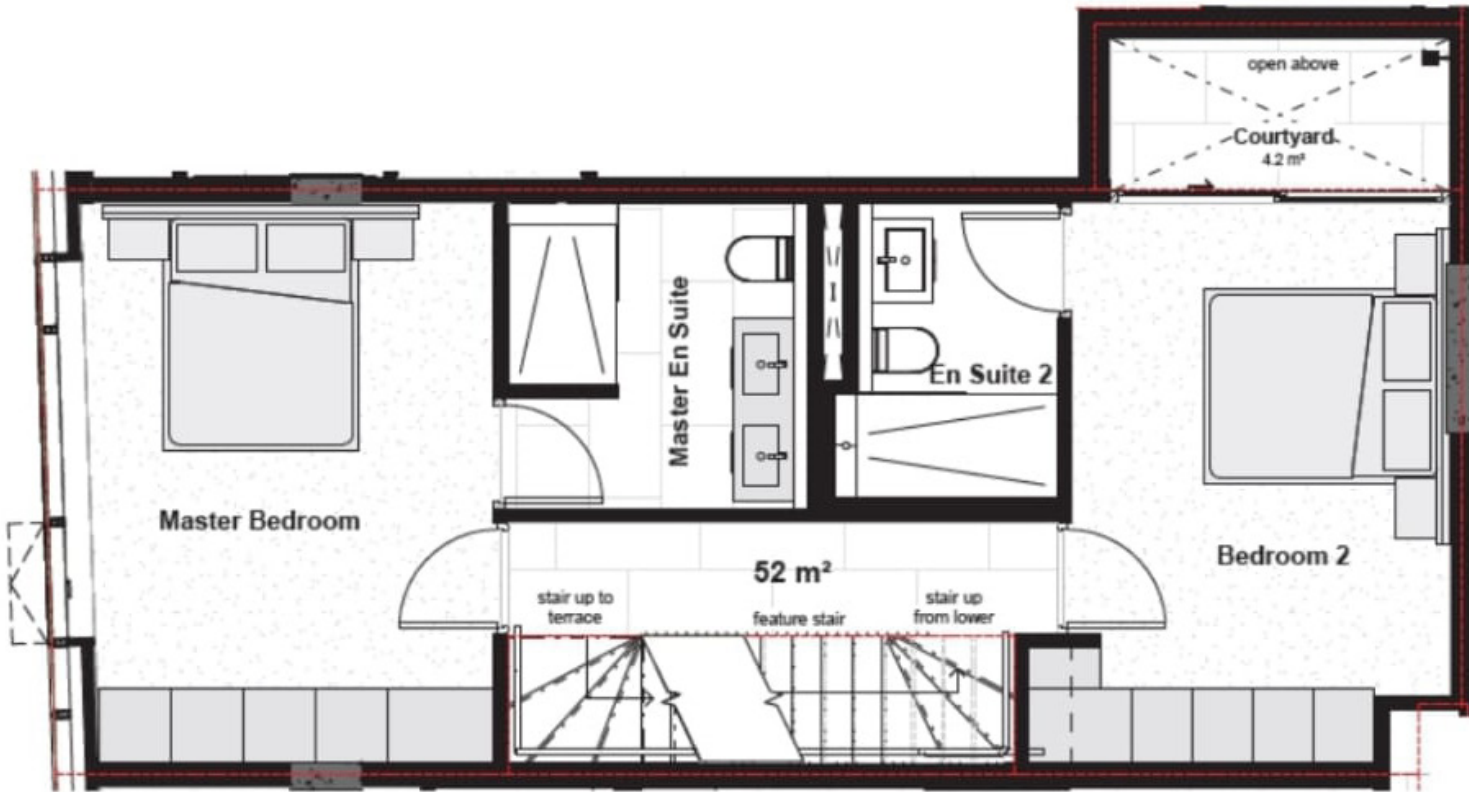
PENTHOUSE RESIDENTIAL 25TH FLOOR (lower floor)



UNIT 25-07

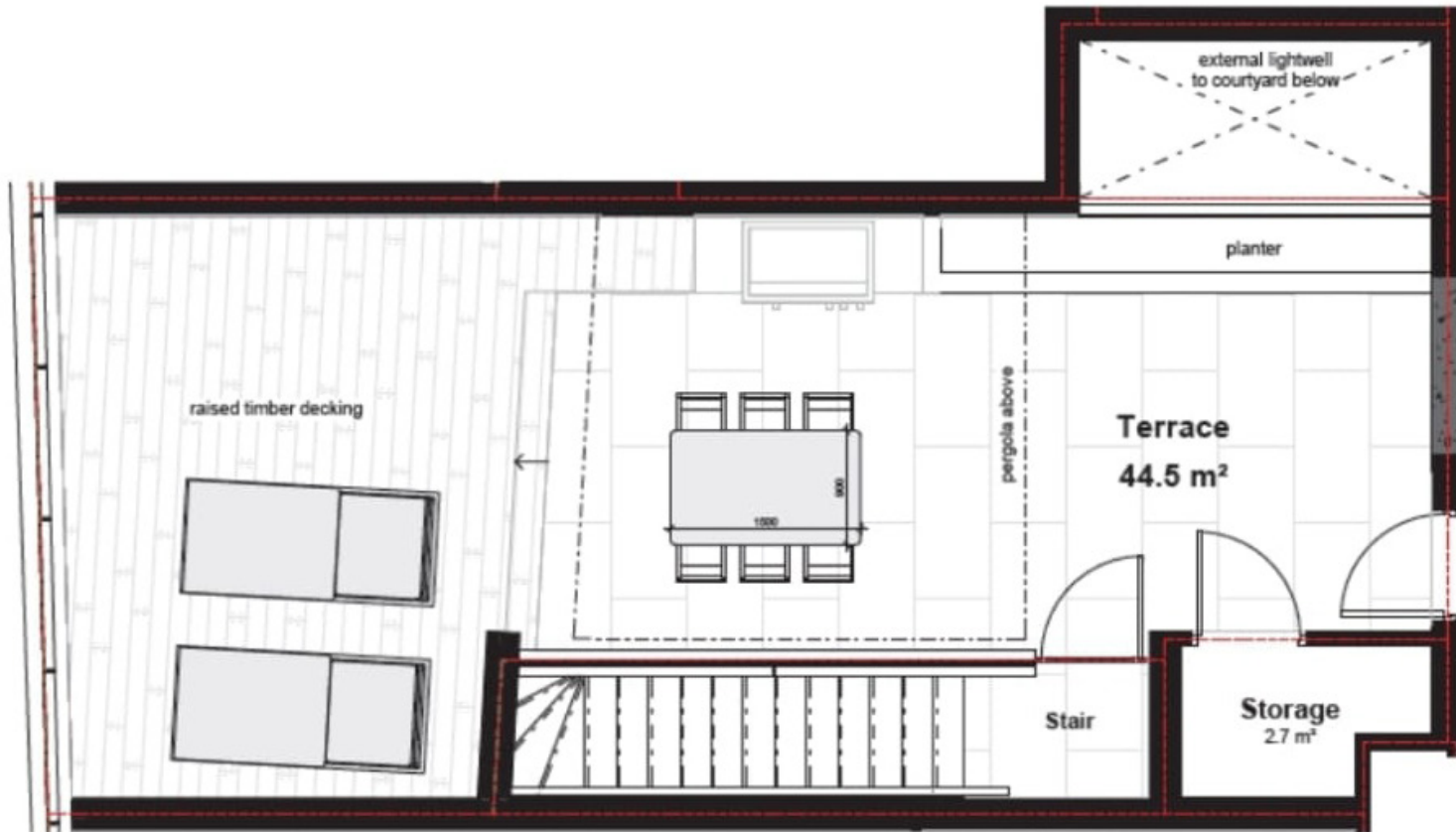


PENTHOUSE RESIDENTIAL 26TH FLOOR (upper floor)



UNIT 25-07

PENTHOUSE RESIDENTIAL 27TH FLOOR (private terrace)



UNIT 25-07