



DEVELOPMENTS

MEDBURN VILLAS  
FLOOR PLANS



HEAD OFFICE **021 433 2580**

[dgproperties.co.za](http://dgproperties.co.za)



## DEVELOPMENTS

### COMPANY PARTICULARS

Established in 2002, DG Properties has proven to be a true real estate success story. The DG name has become synonymous with the proficient and effective marketing and selling of premium grade properties in Cape Town and particularly the sought-after Atlantic Seaboard. DG currently have offices in high profile positions in Sea Point and Southern Suburbs.

DG Properties prides itself on its unique and focused approach to marketing and sales, providing a comprehensive and tailored solution to ensure that sales occur at the optimum price within a compressed space of time. The company utilizes an evolved and distinctive sales force of highly adept and skilled sales agents who are selected for their extensive experience, professionalism and successful track records.

Headed by Managing Director Alexa Horne, DG Properties has a dedicated in-house marketing department ensuring that focused and specialized marketing strategies are implemented. The powerful proprietary DG database combined with its eye-catching and prominent advertising, both in print and digital media, together with our visible network of sales offices support our strong performance on the Western Cape's Atlantic Seaboard, Southern Suburbs, Western Seaboard and surrounding areas.

DOGON GROUP (PTY) LTD  
REGISTRATION NO: 2002/020365/07  
REGISTERED WITH THE PPRA - FFC No. F110941  
ALEXA HORNE (MANAGING DIRECTOR)

P O BOX 605 SEA POINT 8060  
THE KINGS, 101 REGENT ROAD  
SEA POINT, SOUTH AFRICA  
TEL +27 21 433 2580  
FAX +27 21 433 2781

### SALES AGENT



PAUL UPTON  
**071 610 8088**  
paul@dogongroup.com

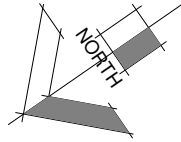
Registered with the PPRA - Full Status Agent - FFC No. 0525859

HEAD OFFICE **021 433 2580**

**d g p r o p e r t i e s . c o . z a**

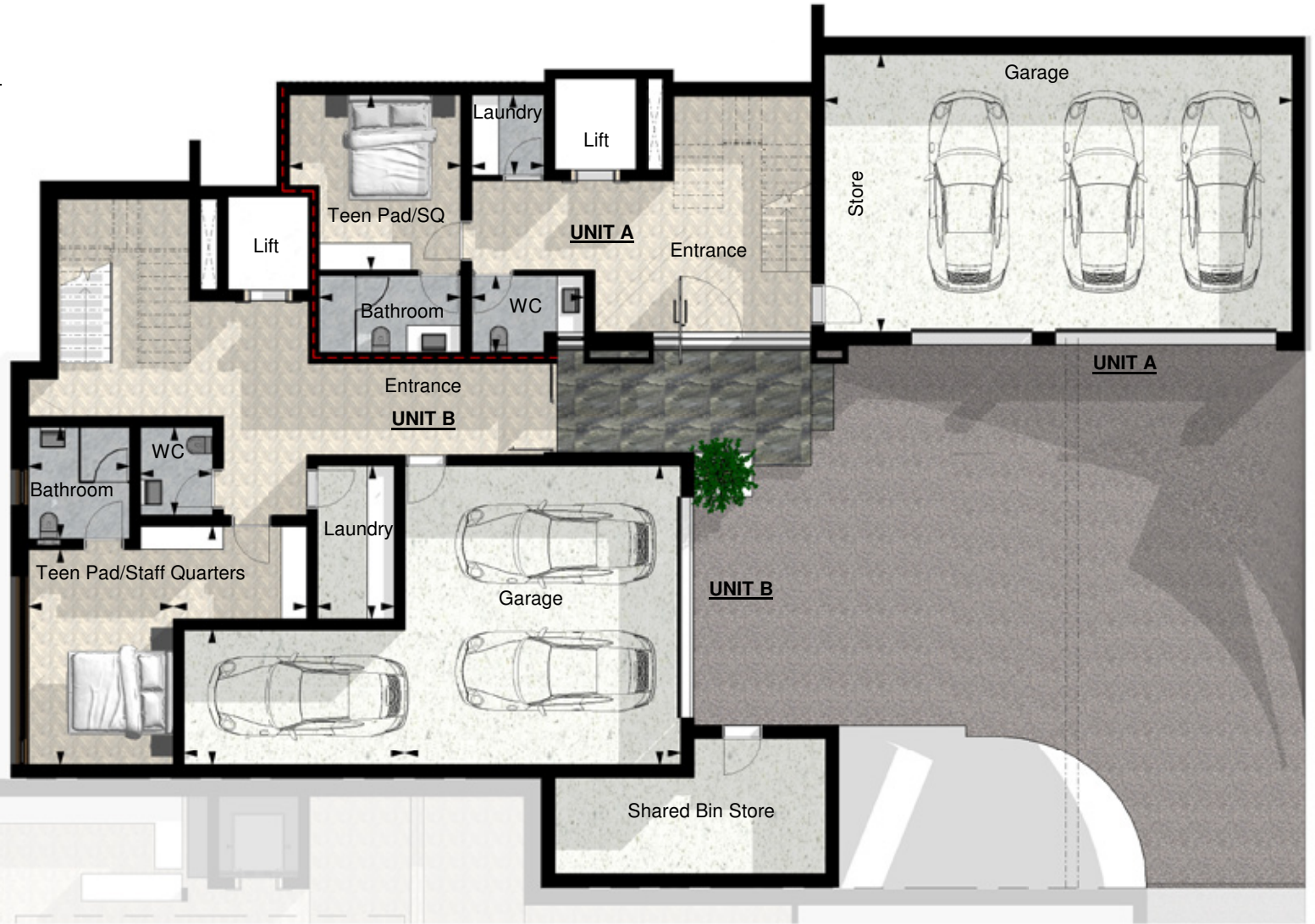
**UNIT A**

	<u>INTERNAL ROOM DIMENSIONS:</u>	<u>INTERNAL ROOM AREAS:</u>
TEEN PAD/STAFF QUARTERS	3,87 x 3,79	14,67m <sup>2</sup>
BATHROOM	3,12 x 1,70	5,31m <sup>2</sup>
LAUNDRY	1,78 x 1,60	2,85m <sup>2</sup>
GWC	2,48 x 1,70	4,22m <sup>2</sup>
GARAGE	6,14 x 10,34	63,49m <sup>2</sup>



**UNIT B**

	<u>INTERNAL ROOM DIMENSIONS:</u>	<u>INTERNAL ROOM AREAS:</u>
TEEN PAD/STAFF QUARTERS	6,16 x 4,76	21,25m <sup>2</sup>
BATHROOM	2,46 x 2,23	5,49m <sup>2</sup>
LAUNDRY	1,70 x 3,38	5,75m <sup>2</sup>
GWC	1,58 x 1,95	3m <sup>2</sup>
GARAGE	6,10 x 6,61	54,67m <sup>2</sup>

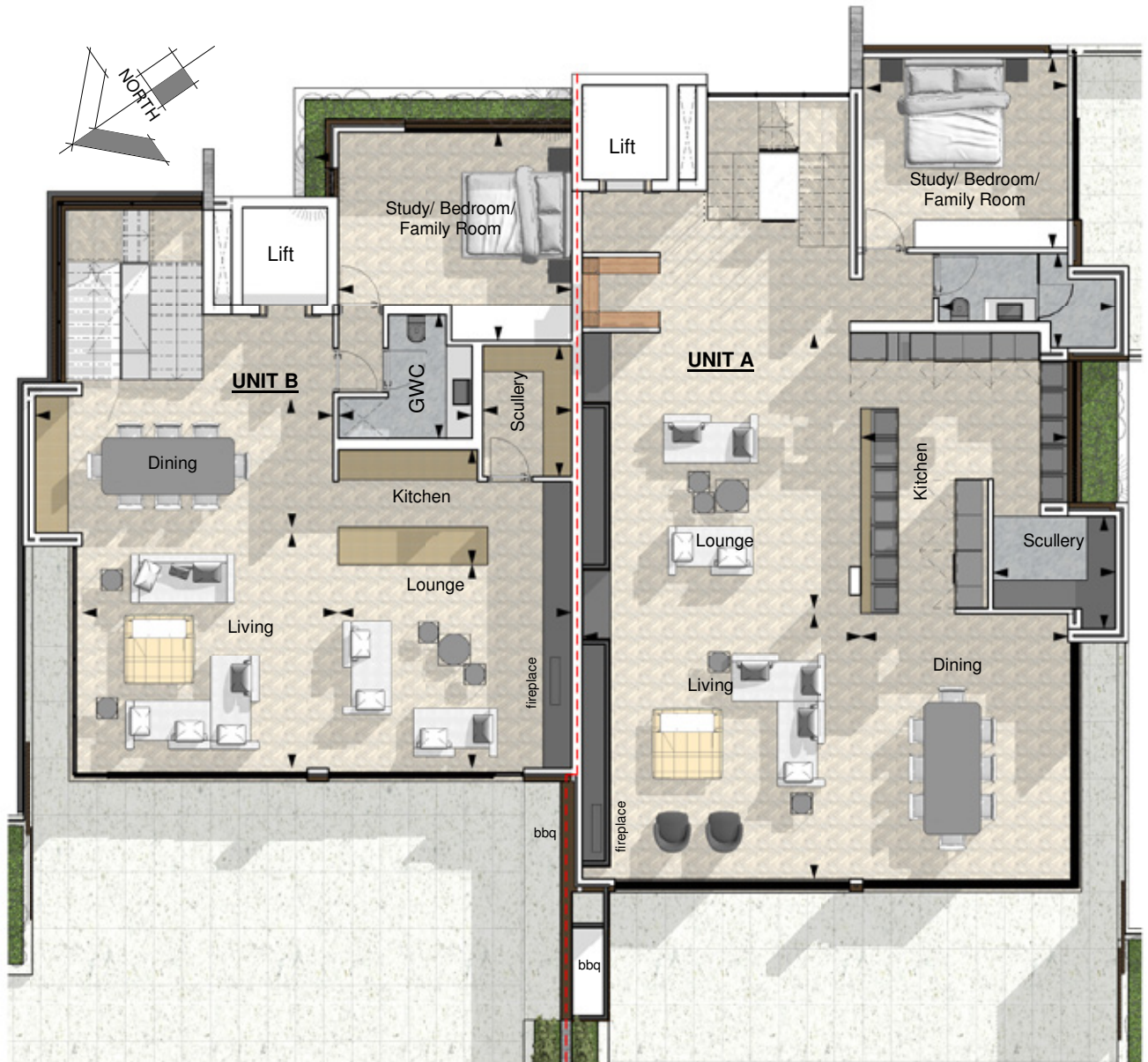
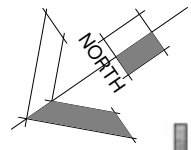


**UNIT A**

	INTERNAL ROOM DIMENSIONS:	INTERNAL ROOM AREAS:
LOUNGE	5,92 x 5,92	35,05m <sup>2</sup>
LIVING	5,63 x 5,92	33,33m <sup>2</sup>
DINNING	4,37 x 5,63	24,61m <sup>2</sup>
KITCHEN	4,39 x 5,92	22,5m <sup>2</sup>
SCULLERY	2,58 x 2,39	5,6m <sup>2</sup>
STUDY/BEDRM	4,01 x 4,34	17,41m <sup>2</sup>
EN-SUITE	3,74 x 2,02	5,8m <sup>2</sup>

**UNIT B**

	INTERNAL ROOM DIMENSIONS:	INTERNAL ROOM AREAS:
LOUNGE	4,33 x 4,96	21,48m <sup>2</sup>
LIVING	5,00 x 5,42	27,10m <sup>2</sup>
DINNING	2,89 x 6,31	18,24m <sup>2</sup>
KITCHEN	2,43 x 4,96	11,04m <sup>2</sup>
SCULLERY	2,77 x 1,87	5,18m <sup>2</sup>
STUDY/BEDRM	4,96 x 4,42	21,93m <sup>2</sup>
EN-SUITE	2,85 x 2,62	5,38m <sup>2</sup>

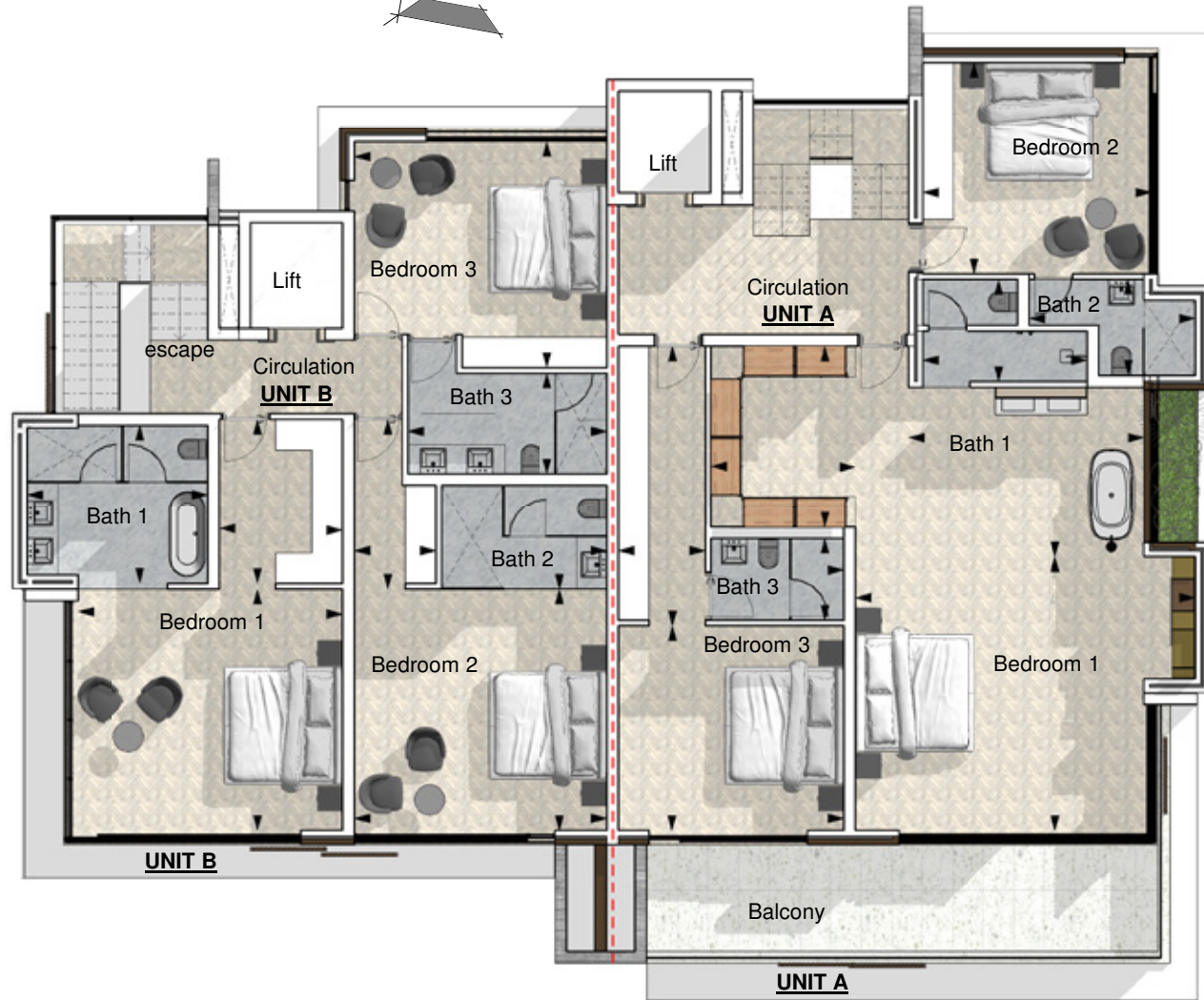
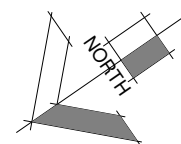


**UNIT A**

	<u>INTERNAL ROOM DIMENSIONS:</u>	<u>INTERNAL ROOM AREAS:</u>
BEDROOM 1	5,36 x 6,66	45,75m <sup>2</sup>
BATH 1	3,55 x 2,83	
BEDROOM 2	4,62 x 3,33	21,85m <sup>2</sup>
BATH 2	2,00 x 3,23	
BEDROOM 3	4,49 x 4,15	18,64m <sup>2</sup>
BATH 3	1,88 x 3,24	
BEDROOM 1	4,00 x 4,41	26,98m <sup>2</sup>
BATH 2	1,70 x 5,49	
BEDROOM 2	1,60 x 2,60	4,16m <sup>2</sup>
BATH 3	1,60 x 2,60	

**UNIT B**

	<u>INTERNAL ROOM DIMENSIONS:</u>	<u>INTERNAL ROOM AREAS:</u>
BEDROOM 1	4,72 x 5,19	32,29m <sup>2</sup>
BATH 1	2,41 x 3,23	
BEDROOM 2	3,11 x 3,55	11,04m <sup>2</sup>
BATH 2	4,96 x 4,72	
BEDROOM 3	3,34 x 1,60	28,77m <sup>2</sup>
BATH 3	2,43 x 4,96	
BEDROOM 1	4,42 x 4,96	21,93m <sup>2</sup>
BATH 1	1,97 x 3,91	
BEDROOM 2	4,42 x 4,96	21,93m <sup>2</sup>
BATH 2	1,97 x 3,91	
BEDROOM 3	4,42 x 4,96	21,93m <sup>2</sup>
BATH 3	1,97 x 3,91	

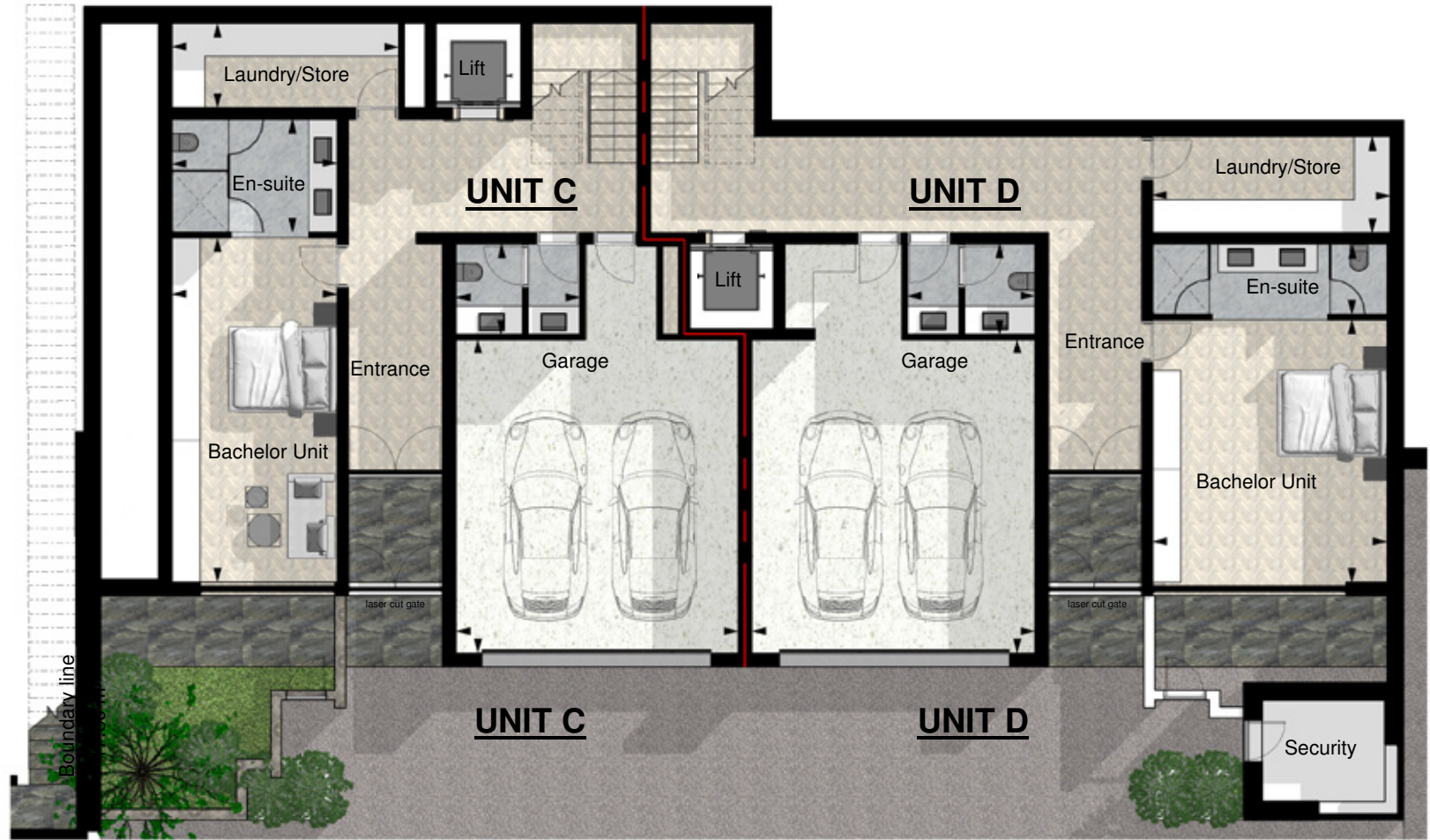
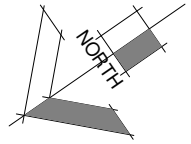


**UNIT C**

	<u>INTERNAL ROOM DIMENSIONS:</u>	<u>INTERNAL ROOM AREAS:</u>
BACHELOR UNIT	7,31 x 3,52	25,74m <sup>2</sup>
EN-SUITE	2,40 x 3,52	8,45m <sup>2</sup>
LAUNDRY/STORE	1,80 x 4,83	8,70m <sup>2</sup>
GWC	2,63 x 1,92	5,05m <sup>2</sup>
GARAGE	6,65 x 6,00	39,90m <sup>2</sup>

**UNIT D**

	<u>INTERNAL ROOM DIMENSIONS:</u>	<u>INTERNAL ROOM AREAS:</u>
BACHELOR UNIT	5,57 x 5,03	28,02m <sup>2</sup>
EN-SUITE	1,49 x 5,03	7,50m <sup>2</sup>
LAUNDRY/STORE	2,03 x 5,03	10,21m <sup>2</sup>
GWC	1,92 x 2,71	5,21m <sup>2</sup>
GARAGE	6,65 x 6,00	39,90m <sup>2</sup>



phone +27 (0)21 422 1331 fax +27 (0)21 4261658  
 design@jma.za.net 403 De Oude Schuur 120 Bree St  
 Cape Town 8000

**Unit C & D First Floor**

**Medburn Villas**

CLIENT: Elvin Fredericks

SCALE: 1 : 100

DWG NO: Marketing plans4

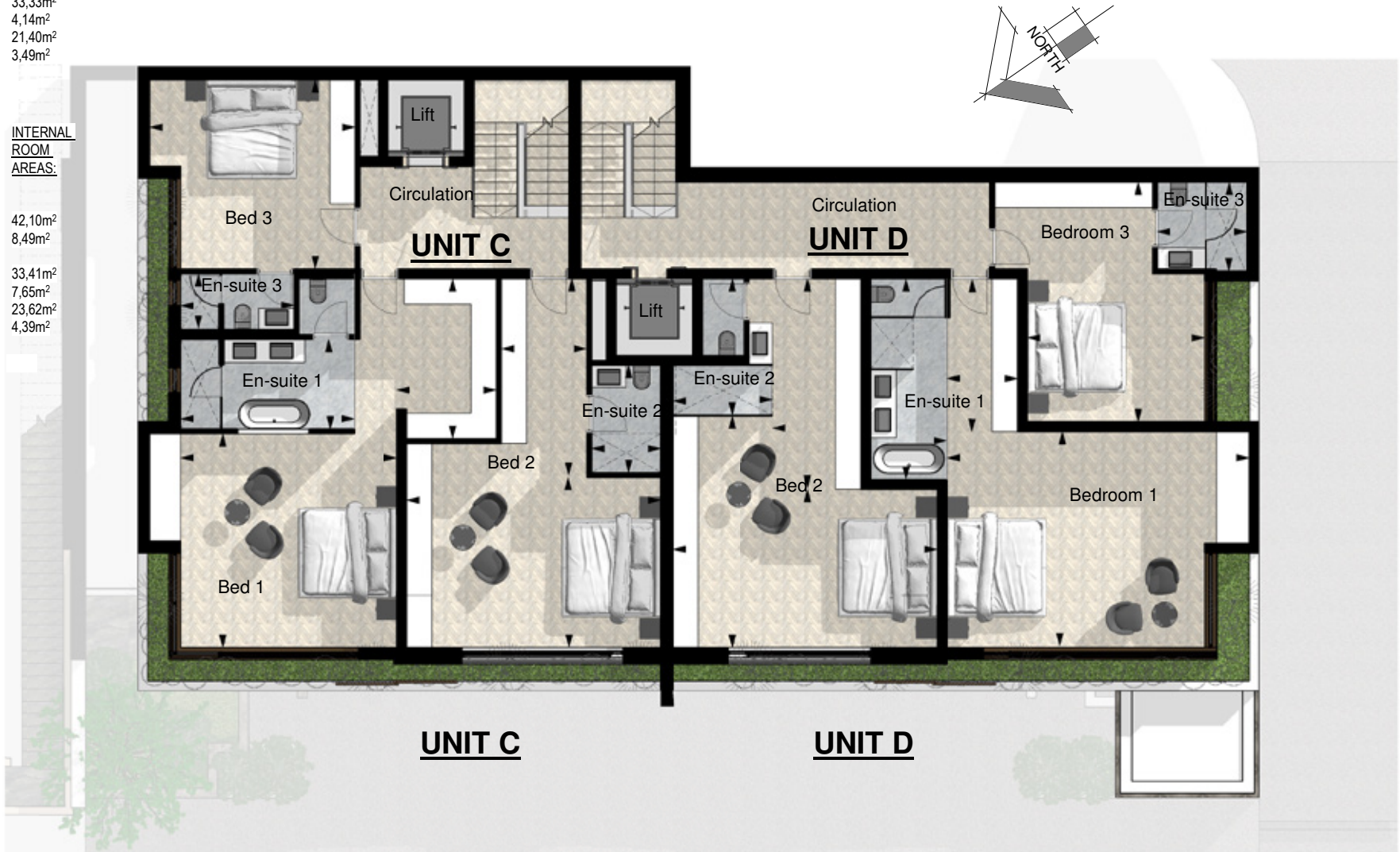
Rev - DATE: 04/05/22

**UNIT C**

	INTERNAL ROOM DIMENSIONS:	INTERNAL ROOM AREAS:
BEDROOM 1	5,02 x 5,09	
EN-SUITE 1	2,34 x 3,78	34,48m <sup>2</sup>
BEDROOM 2	2,13 x 4,06	8,65m <sup>2</sup>
EN-SUITE 2	4,00 x 5,98	
	4,68 x 2,01	33,33m <sup>2</sup>
EN-SUITE 2	1,63 x 2,54	4,14m <sup>2</sup>
BEDROOM 3	4,43 x 4,83	21,40m <sup>2</sup>
EN-SUITE 3	1,31 x 2,66	3,49m <sup>2</sup>

**UNIT D**

	INTERNAL ROOM DIMENSIONS:	INTERNAL ROOM AREAS:
BEDROOM 1	5,07 x 7,12	42,10m <sup>2</sup>
BATH 1	1,66 x 3,61	8,49m <sup>2</sup>
BEDROOM 2	1,79 x 4,74	
	6,23 x 3,71	33,41m <sup>2</sup>
BATH 2	2,07 x 4,97	7,65m <sup>2</sup>
BEDROOM 3	2,36 x 3,24	23,62m <sup>2</sup>
BATH 3	4,18 x 5,65	4,39m <sup>2</sup>
	2,11 x 2,08	



**UNIT C**

**UNIT D**

**Unit C & D Second Floor**

**Medburn Villas**

**UNIT C**

LIVING  
DINNING  
KITCHEN  
SCULLERY

INTERNAL ROOM DIMENSIONS:  
6,44 x 6,09  
5,21 x 4,84  
5,21 x 2,10  
4,82 x 2,31

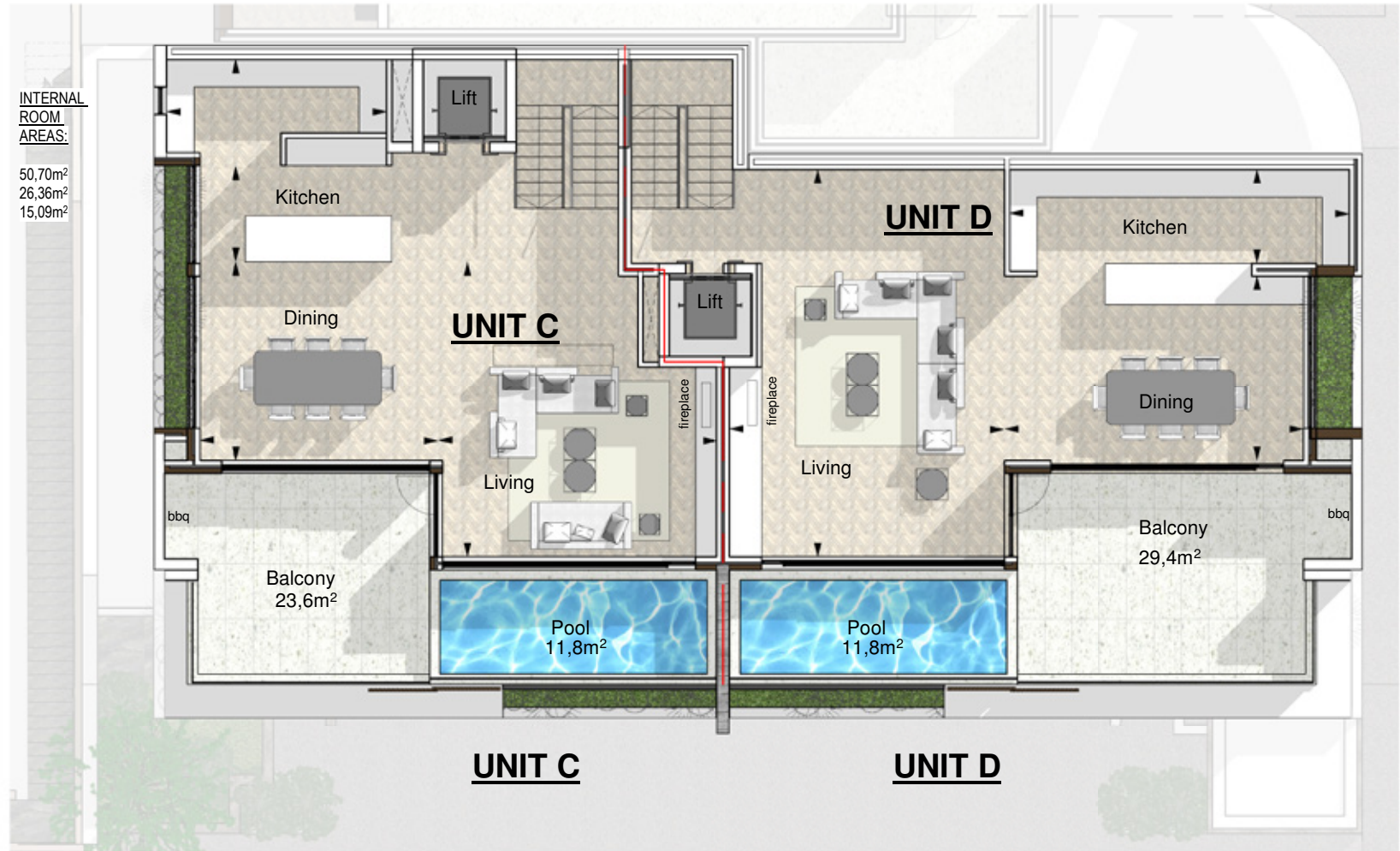
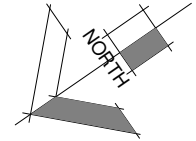
INTERNAL ROOM AREAS:  
39,22m<sup>2</sup>  
25,22m<sup>2</sup>  
10,95m<sup>2</sup>  
11,14m<sup>2</sup>

**UNIT D**

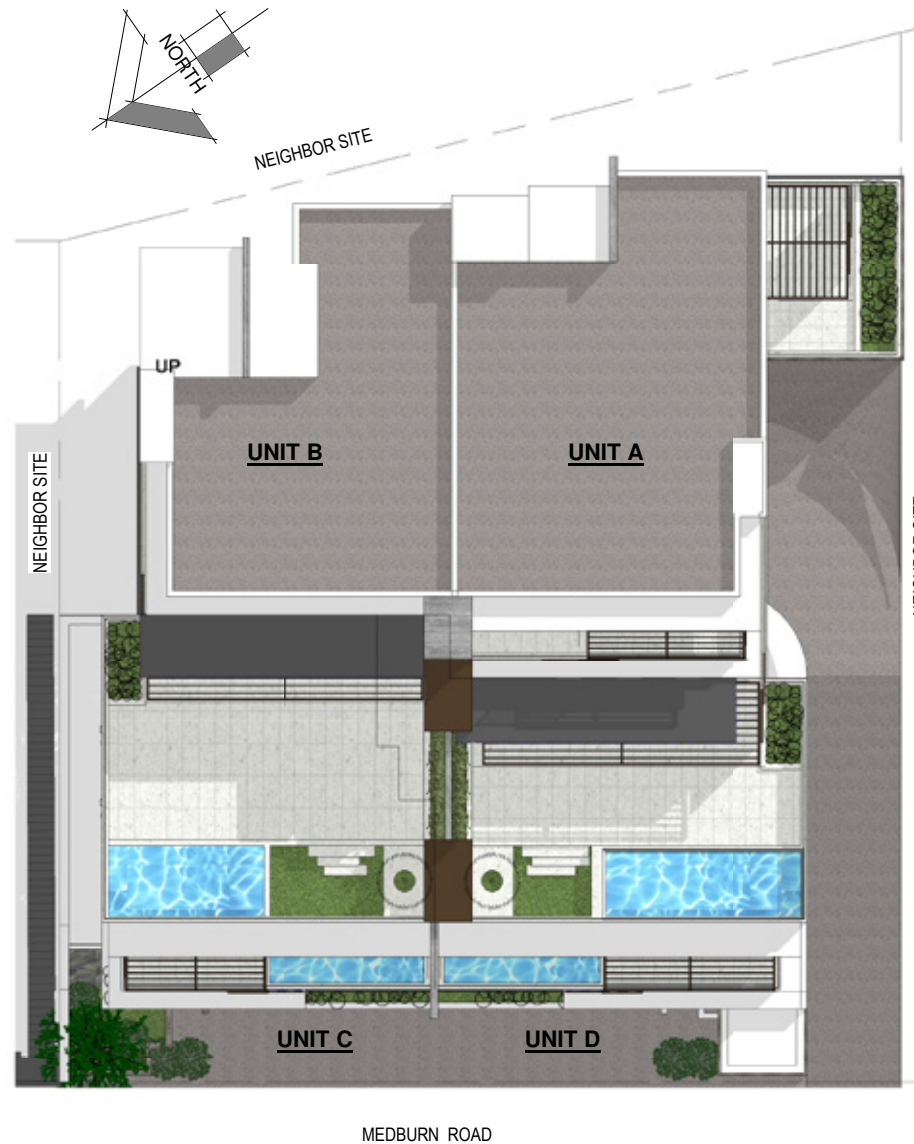
LIVING  
DINNING  
KITCHEN

INTERNAL ROOM DIMENSIONS:  
6,00 x 8,45  
4,03 x 6,54  
2,03 x 7,43

INTERNAL ROOM AREAS:  
50,70m<sup>2</sup>  
26,36m<sup>2</sup>  
15,09m<sup>2</sup>

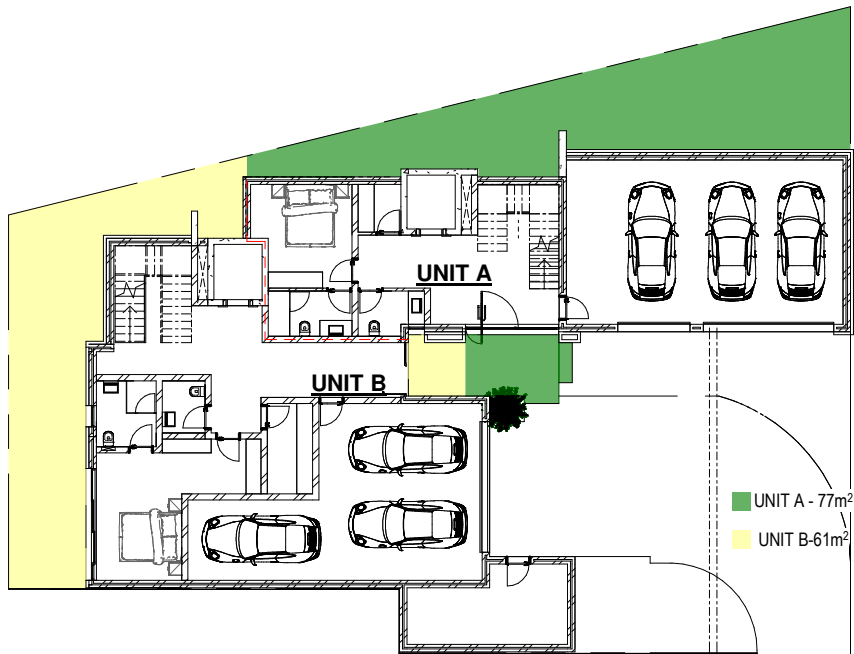






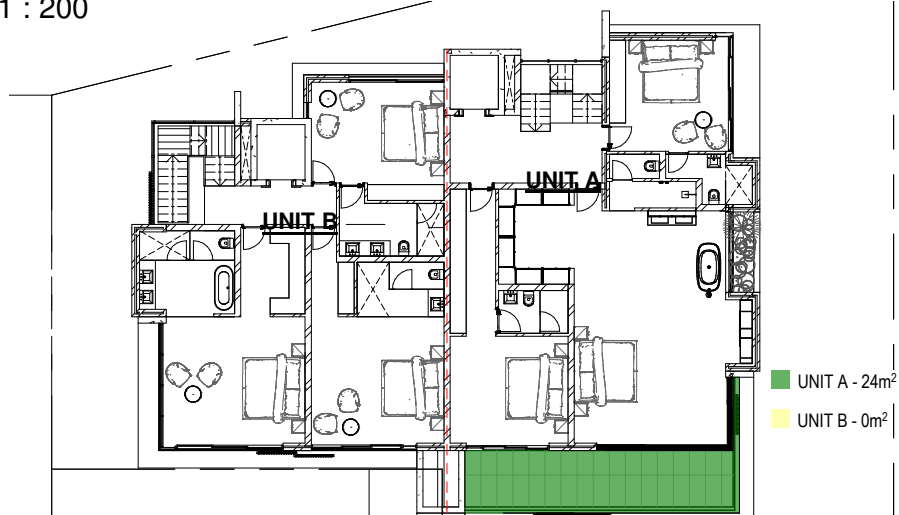
# OVERALL SITE PLAN

## Medburn Villas



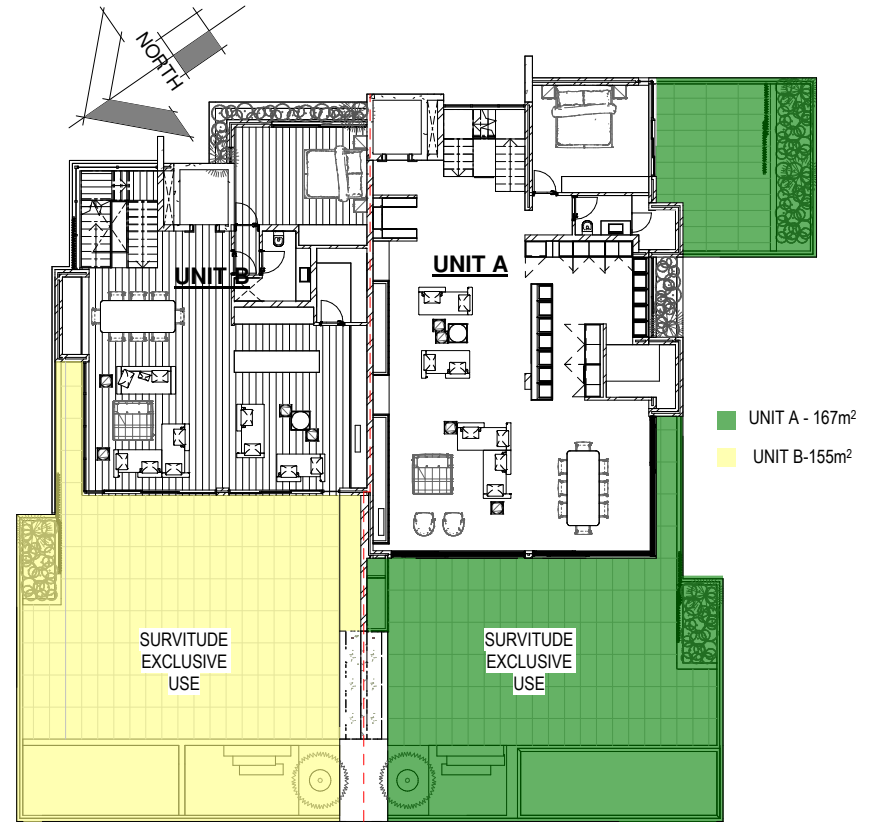
Portion 1 First Storey - Units A & B

1 : 200



Portion 1 Third Storey - Units A & B

1 : 200

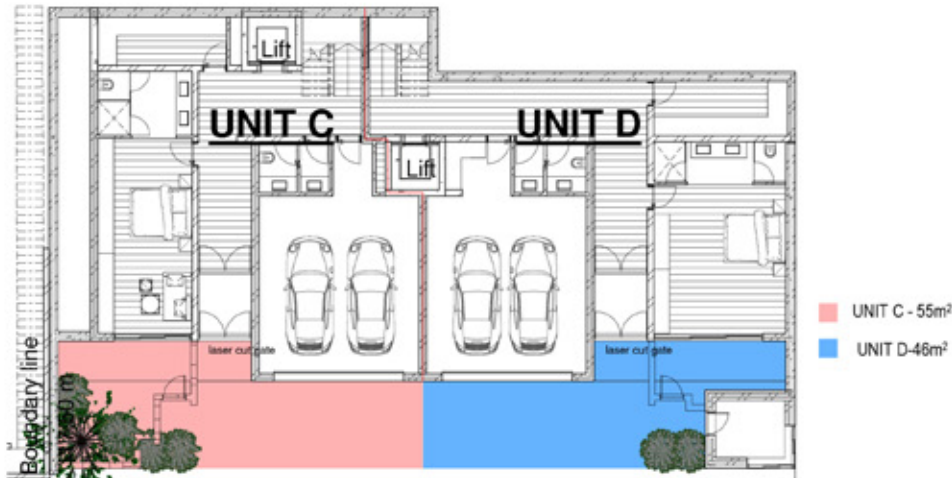


Portion 1 Second Storey - Units A & B

1 : 200

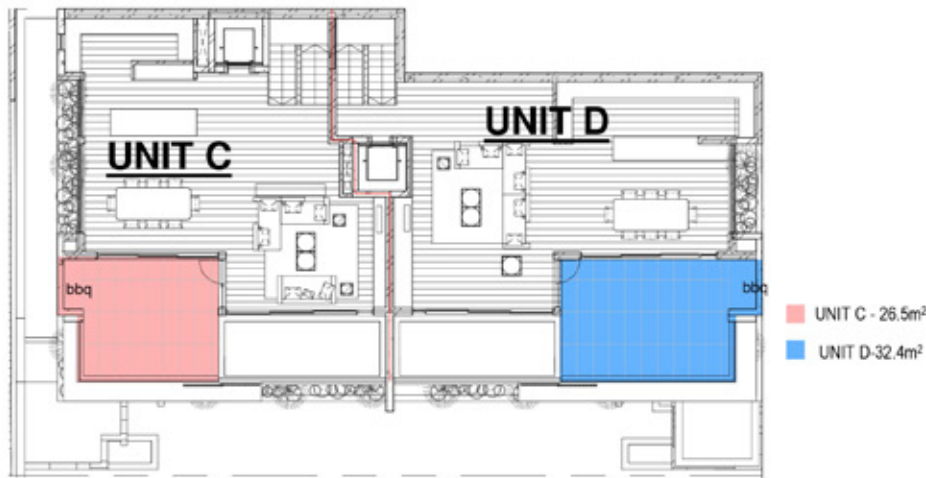
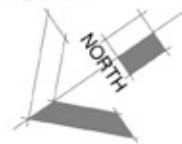
EUA PLAN FOR UNIT A & B

**Medburn Villas**



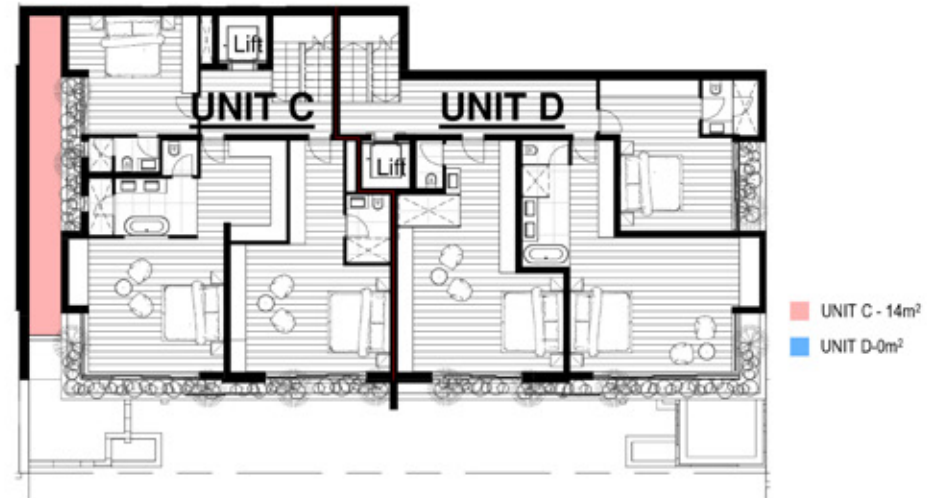
Portion 2 First Storey - Unit C & D

1 : 200



Portion 2 Third Storey - Unit C & D

1 : 200



Portion 2 Second Storey - Unit C & D

1 : 200

jenny mills

ARCHITECT

phone +27 (0)21 422 1331 fax +27 (0)21 426 1659  
design@jyma.za.net 403 De Oude Schuur 120 Eerie St  
Cape Town 8000

GERD WEIDEMAN ARCHITECTS

## EUA PLAN FOR UNIT C & D

## Medburn Villas

CLIENT: Elvin Fredericks

SCALE: 1 : 200

DWG NO: Marketing plans9

Rev - A

DATE: 04/22/22