



DEVELOPMENTS

19 THERESA
FLOOR PLANS



19 THERESA

HEAD OFFICE **021 433 2580**

dgproperties.co.za



DEVELOPMENTS

COMPANY PARTICULARS

Established in 2002, DG Properties has proven to be a true real estate success story. The DG name has become synonymous with the proficient and effective marketing and selling of premium grade properties in Cape Town and particularly the sought-after Atlantic Seaboard. DG currently have offices in high profile positions in Sea Point and Southern Suburbs.

DG Properties prides itself on its unique and focused approach to marketing and sales, providing a comprehensive and tailored solution to ensure that sales occur at the optimum price within a compressed space of time. The company utilizes an evolved and distinctive sales force of highly adept and skilled sales agents who are selected for their extensive experience, professionalism and successful track records.

Headed by Managing Director Alexa Horne, DG Properties has a dedicated in-house marketing department ensuring that focused and specialized marketing strategies are implemented. The powerful proprietary DG database combined with its eye-catching and prominent advertising, both in print and digital media, together with our visible network of sales offices support our strong performance on the Western Cape's Atlantic Seaboard, Southern Suburbs, Western Seaboard and surrounding areas.

DOGON GROUP (PTY) LTD
REGISTRATION NO: 2002/020365/07
REGISTERED WITH THE PPRA - FFC No. F110941
ALEXA HORNE (MANAGING DIRECTOR)

P O BOX 605 SEA POINT 8060
THE KINGS, 101 REGENT ROAD
SEA POINT, SOUTH AFRICA
TEL +27 21 433 2580
FAX +27 21 433 2781

SALES AGENT



PAUL UPTON
071 610 8088
paul@dgproperties.co.za

Registered with the PPRA - Full Status Agent - FFC No. 0525859

HEAD OFFICE **021 433 2580**

d g p r o p e r t i e s . c o . z a

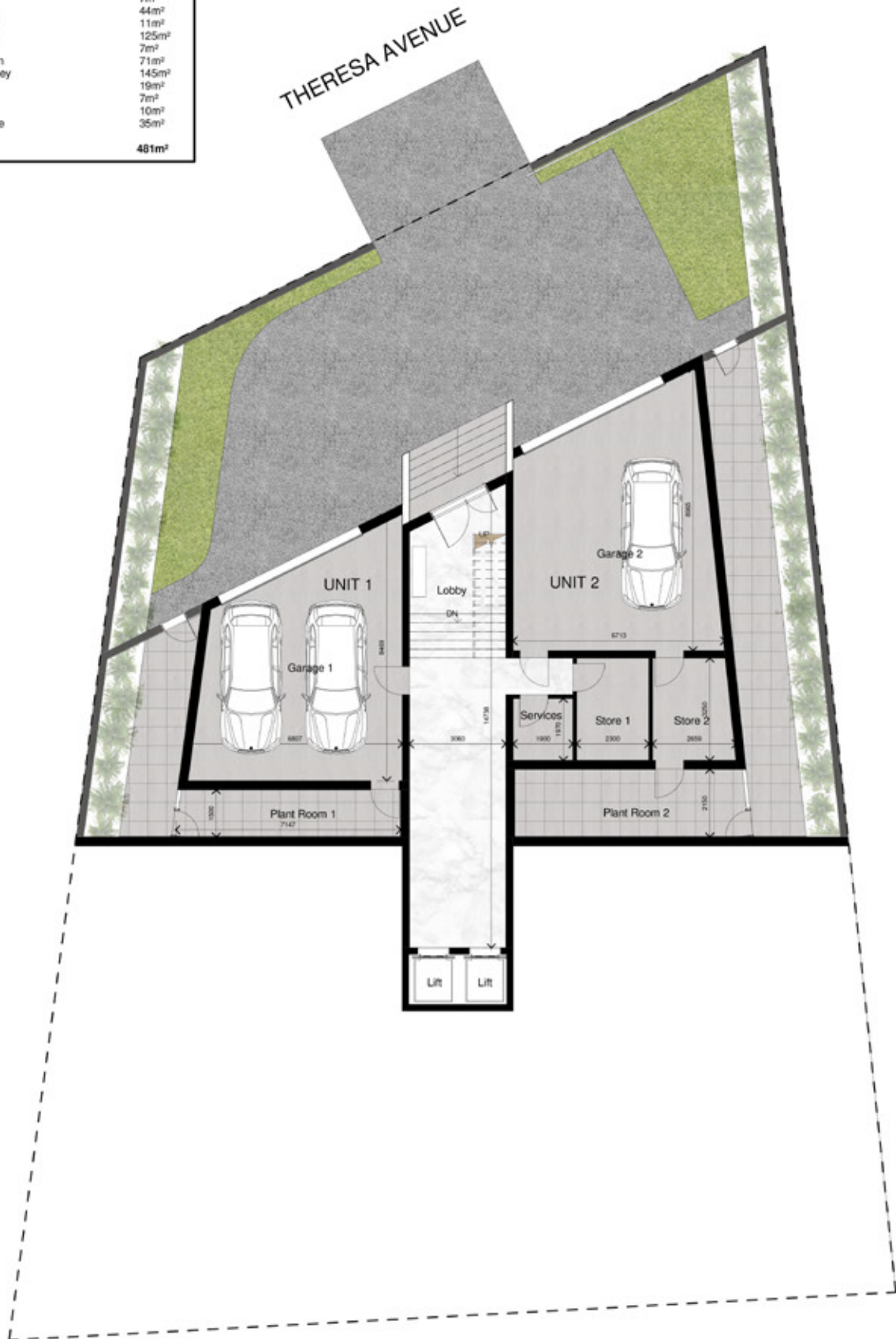
ERF 3099 Dwelling Sizes

NOTES:

All square meters have been measured to the internal finish face of walls.

UNIT 1

Storage	7m ²
Garage	44m ²
Plant Room	11m ²
First Storey	125m ²
Balcony	7m ²
Patio/Garden	71m ²
Second Storey	145m ²
Terrace	19m ²
Pool	7m ²
Mezzanine	10m ²
Roor Terrace	35m ²
Total	481m²



GROUND STOREY
1:100

ERF 3099 Dwelling Sizes

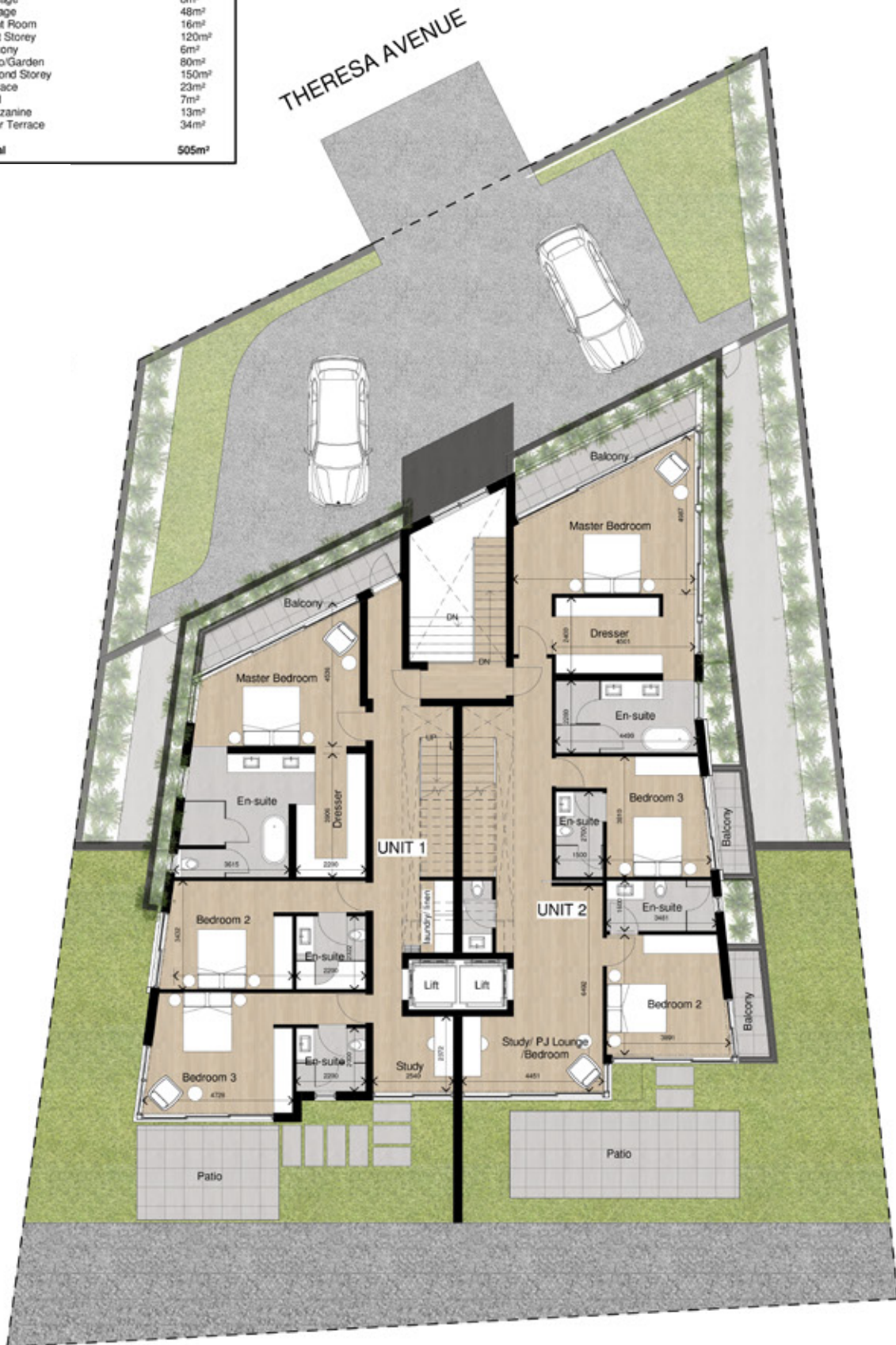
NOTES:

All square meters have been measured to the external finish face of walls.

UNIT 2

Storage	8m ²
Garage	48m ²
Plant Room	16m ²
First Storey	120m ²
Balcony	6m ²
Patio/Garden	80m ²
Second Storey	150m ²
Terrace	23m ²
Pool	7m ²
Mezzanine	13m ²
Roof Terrace	34m ²

Total 505m²



FIRST STOREY
1:100

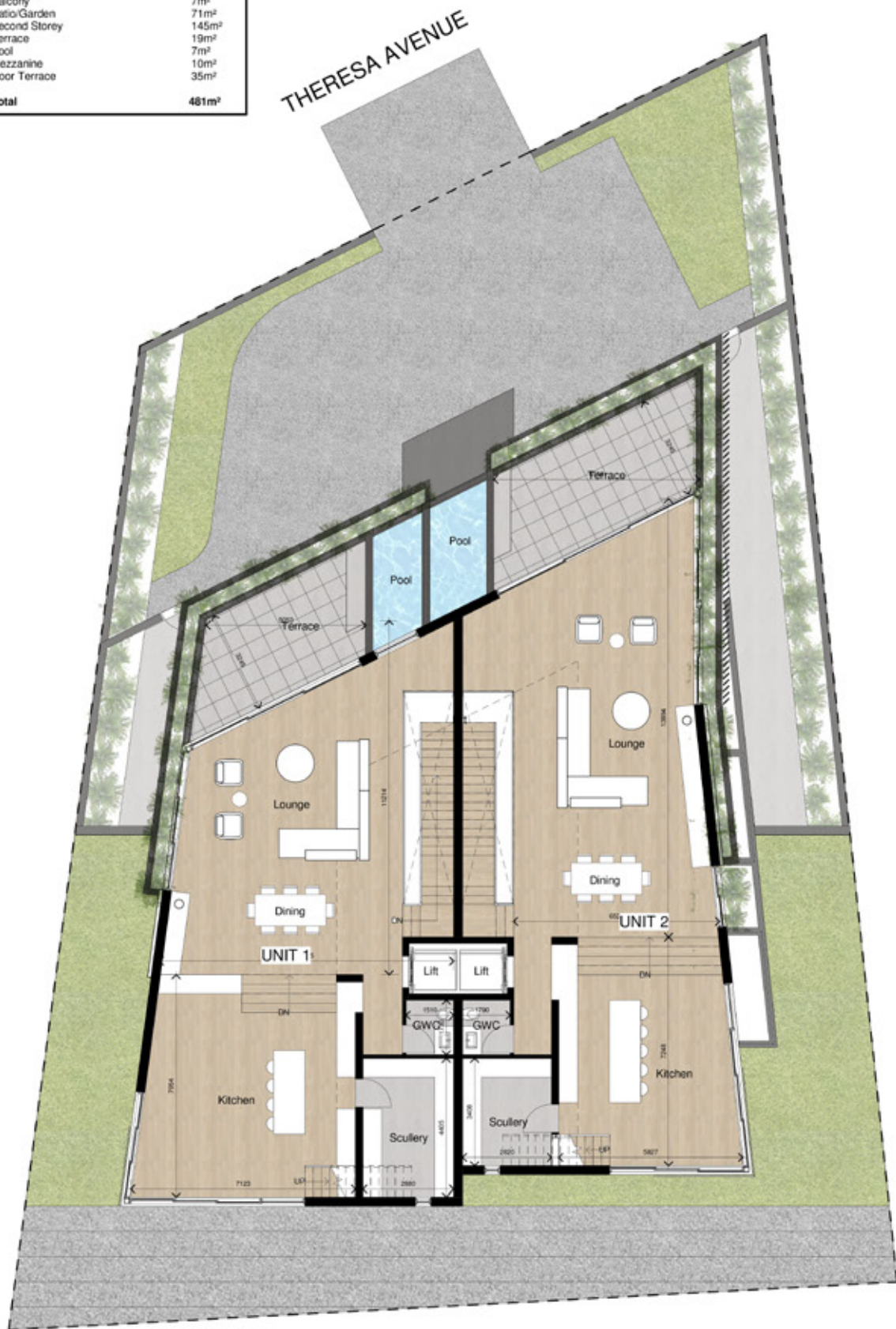
ERF 3099 Dwelling Sizes

NOTES:

All square meters have been measured to the internal finish face of walls.

UNIT 1

Storage	7m ²
Garage	44m ²
Plant Room	11m ²
First Storey	125m ²
Balcony	7m ²
Patio/Garden	71m ²
Second Storey	145m ²
Terrace	19m ²
Pool	7m ²
Mezzanine	10m ²
Roof Terrace	35m ²
Total	481m²



SECOND STOREY
1:100

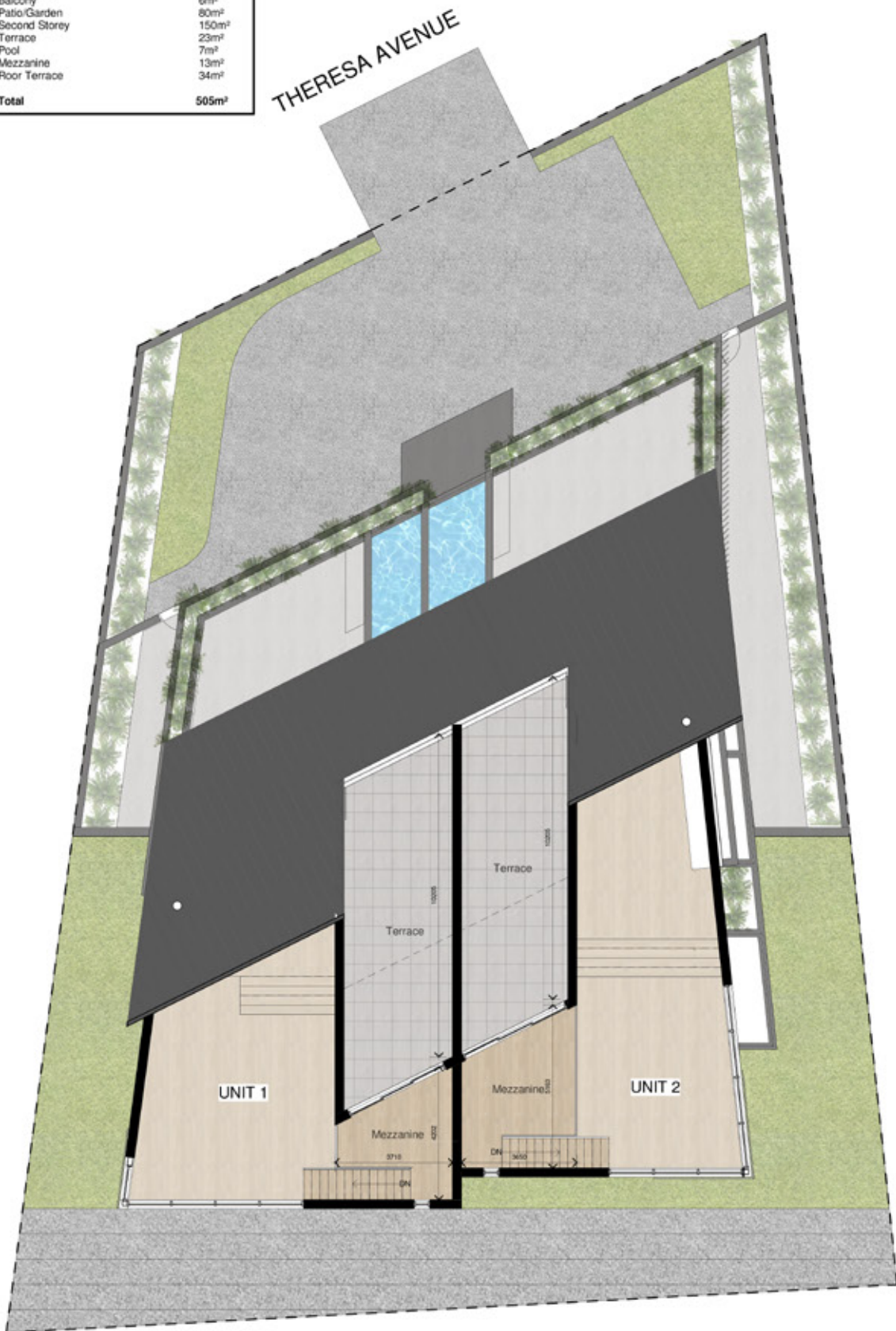
ERF 3099 Dwelling Sizes

NOTES:

All square meters have been measured to the external finish face of walls.

UNIT 2

Storage	8m ²
Garage	48m ²
Plant Room	16m ²
First Storey	120m ²
Balcony	6m ²
Patio/Garden	80m ²
Second Storey	150m ²
Terrace	23m ²
Pool	7m ²
Mezzanine	13m ²
Roof Terrace	34m ²
Total	505m²



MEZZANINE
1:100